

Autumn Term Newsletter

September 6th 2024



**BROOKTHORPE
HALL SCHOOL**

Message from the Headteacher

Dear Parents and Carers,

It has been a pleasure to welcome pupils and staff to Brookthorpe Hall this week. It was wonderful to see pupils excited to return to school on Wednesday and they are quickly adapting to their new classes and many new faces in the school (more about that later).

Our new play equipment is already proving to be very popular with all pupils. As I am sure you are aware, there is now a professionally installed swing, trampoline, trim trail and gym equipment available for pupils to enjoy at breaks and lunchtimes. Furthermore, pupils may have noticed that our top floor is now being used by staff for offices and a new staffroom. This will facilitate more space for our pupils in the main school building over the next few weeks and months.

Looking ahead to the new term, there are many changes which I have informed you about before the summer holidays. Our new curriculum is now in place for lower phase and upper phase pupils. This means that teachers in the lower phase remain with their pupils and teaching assistants every day. However, in our upper phase, secondary specialists are delivering their subjects to all four classes like a secondary school curriculum. Please be assured that pupils remain in the same classroom with their teaching assistants.

Next week pupils will also enjoy outdoor education at The Wilderness Centre in the Forest of Dean. Classes will spend one day each week at The Wilderness Centre as follows:

- Mondays: Larch & Pine Classes
- Tuesdays: Birch & Ash Classes
- Thursdays: Cedar & Elm Classes
- Fridays: Yew & Oak Classes

I am delighted to confirm that Ed Farrow will deliver all outdoor education at The Wilderness Centre and teaching assistants will accompany each class. Ed will be in contact shortly with more details.

Welcome to Brookthorpe Hall

It is also my pleasure to welcome many new colleagues to the Brookthorpe Hall team:



Sabrina Assistant
Headteacher (Inclusion) &
SENCO



Louise
Head of English



Russell
Head of Maths



Kes
Head of PSHE/Careers



Jasmine
Lead Clinician



Jamila
Teacher



Kathyryne
Teacher



Serena
Teacher



Vanessa
Administrator/Receptionist



Hannah
Speech & Language
Therapist

Additionally, Louise Waller will be joining us Assistant Headteacher for Curriculum on Thursday 19th September.

I am not only pleased that our Brookthorpe Hall team is now fully staffed, but also very excited about the experience and commitment our new colleagues will bring to our already amazing team.

Kind Regards,

Jon Bell
Headteacher



New Rewards System

From Monday 16th September we will be fully implementing our new rewards system. The purpose of the reward system is to increase pupil engagement and celebrate achievements in all aspects of school life. The system is designed to ensure that all pupils, regardless of their needs, have equal opportunity to earn points and receive rewards.

Reward points will be earned by pupils when they follow school rules. The school rules are:

- **Be kind to students, staff and visitors**
- **Try your best to learn**
- **Follow staff's instructions**
- **Look after your school and everything in it**

All pupils will be able to earn 3 points for each rule each lesson. Three rules will apply at lunch and break times. Once a pupil has earned points they will not be taken away.

Points will be earned as follows.

Pupil follows the rule:

- All or most of the time; 3 points
- Some of the time; 2 points
- A bit of the time; 1 point

All pupils will be able to take part in reward activities each week (Thursday for lower school and Friday for upper school). Pupils will choose their activities in order of points. Therefore, the pupils with the most points will get the most choice. We will, of course, ensure that identified pupils are set different points targets to ensure that they also enjoy achievement and success.

At the end of each term (6 times a year) all pupils will have the opportunity to take part in reward trips or onsite activities. Pupils will choose their rewards using the same system as the weekly rewards.

Pupils' Belongings

It is always lovely for pupils to bring in their personal belongings to show staff and their friends. However, this can be problematic when pupils are bringing too many items into school.

Please could we ask for your support in ensuring that pupils bring only one item that is important to them and supports them through the day. We would kindly request that pupils do not bring toys as this can be a distraction when focusing during lessons.



Clinical Team Newsletter

We are delighted to introduce you to the Therapy Team at Brookthorpe Hall School. Our goal is to support every child's unique needs, ensuring they thrive in their educational journey. Our experienced team is here to work closely with you, your child, and the school staff to provide the best possible support

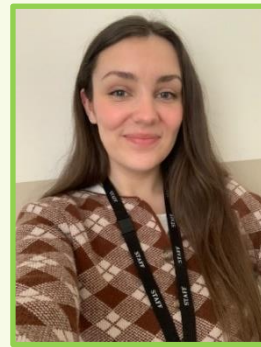
At Brookthorpe, our Therapy Team plays a role in supporting the holistic development of each child. We want to work collaboratively with teachers, support staff, and parents to ensure that therapeutic interventions are seamlessly integrated into the school's educational framework. By closely aligning our work with the curriculum and individual Education, Health, and Care Plans (EHCPs), we can support children in areas such as communication, motor skills, sensory processing, and emotional regulation and well-being.



Hollie
Occupational Therapist



Fiona
Psychotherapist



Ruby
Therapy Assistant



Jasmine
Lead Clinician
Specialist Occupational
Therapist



Hannah
Speech & Language
Therapist

Our Approach:

At Brookthorpe, we follow the **Rainbow Offer of Outcomes** framework, a structured approach designed by our clinical teams to ensure comprehensive support for each child. This framework categorises our interventions into different levels, allowing us to meet the diverse needs of our students:

Universal Input: This foundational level benefits all students. We provide general strategies, classroom observations, and teacher training to create an inclusive environment where every child can flourish.

Enhanced Input: For children who need additional support, we offer more focused interventions. This includes small group sessions, targeted activities, and specific tools to address needs.

Specialist Input: This tier is for children with more specific needs and is usually something outlined in the child's EHCP. We provide individualised therapy, including one-on-one sessions, specialised assessments, and tailored resources to meet their unique requirements.

Through the Rainbow Offer of Outcomes, we ensure that every child receives the right level of support at the right time, helping them achieve their full potential. We believe in the power of collaboration. Your insights as parents are invaluable, and we encourage open communication to ensure we are meeting your child's needs effectively. Please feel free to reach out to our lead clinician or a member of our senior leadership team if you have questions, concerns, or suggestions.

Warm Regards,

Brookthorpe Hall School Therapy Team

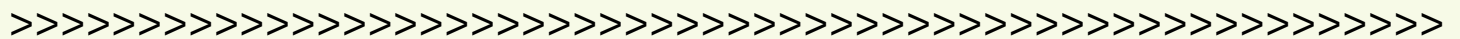


Term Dates

Term 1: Mon 2nd Sept – Fri 25th Oct 2024	40 days
Term 2: Mon 4th Nov – Fri 20th Dec 2024	35 days
Term 3: Mon 6th Jan - Fri 14th Feb 2025	30 days
Term 4: Mon 24th Feb – Fri 11th Apr 2025	35 days
Term 5: Mon 28th April – Fri 23rd May 2025	19 days
Term 6: Mon 2nd June – Mon 21st July 2025	36 days

INSET Days

- Monday 2nd September 2024
- Tuesday 3rd September 2024
- Monday 6th January 2025
- Friday 11th April 2025
- Monday 21st July 2025



Christmas Bank Holidays	25th December 2024 Bank Holiday 26th December 2024
New Year Bank Holiday	1st January 2025
Good Friday	18th April 2025
Easter Monday	21st April 2025
Early May Bank Holiday	5th May 2025
Spring Bank Holiday	26th May 2025
Summer Bank Holiday	25th August 2025



BROOKTHORPE HALL SCHOOL



Contact Details

Brookthorpe Hall School, Stroud
Road, Gloucester GL4 0UN
01452 717004